

Project
BUCKS COUNTY JUSTICE CENTER
 Doylestown, PA
 Prepared For
County of Bucks

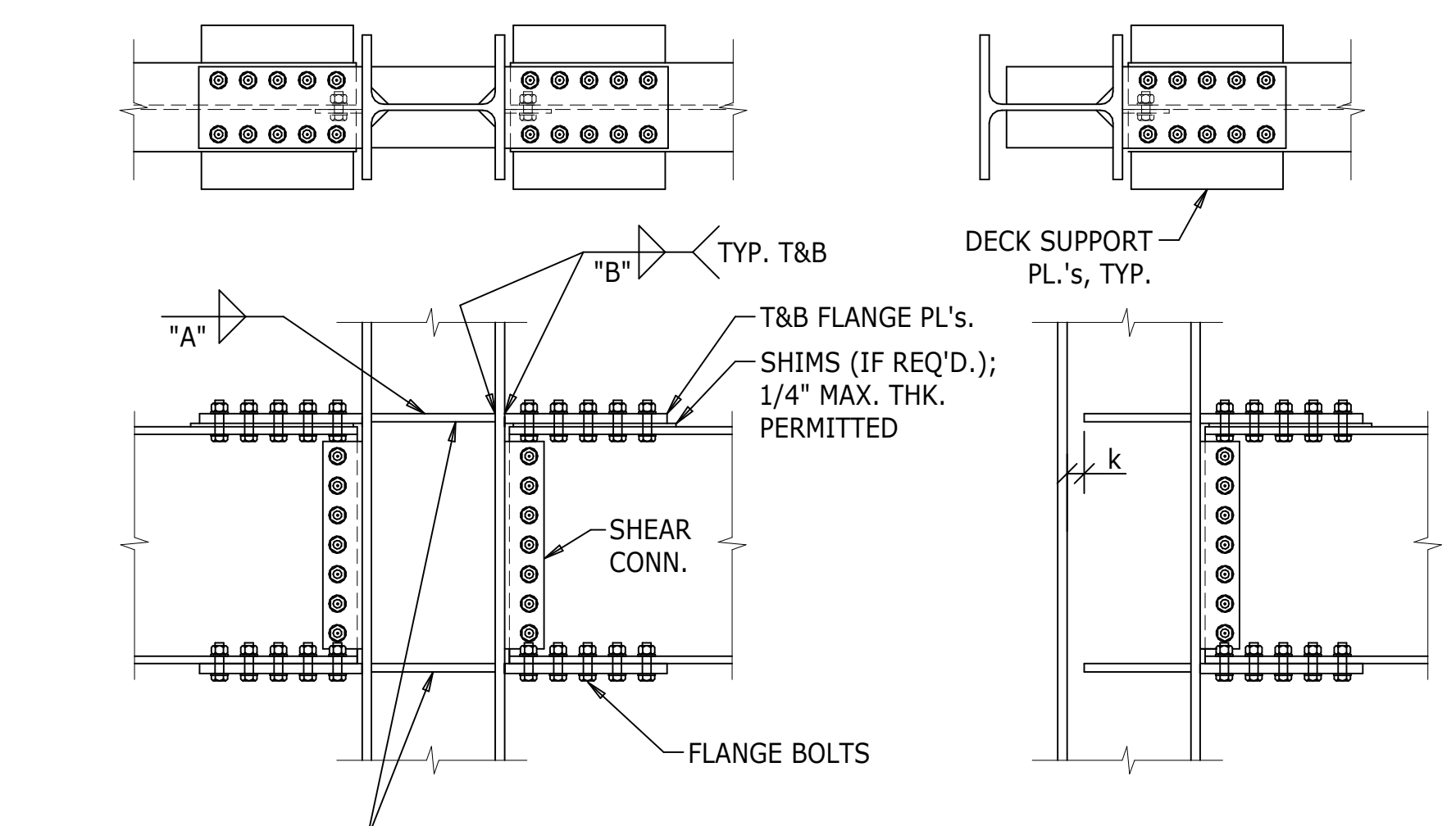
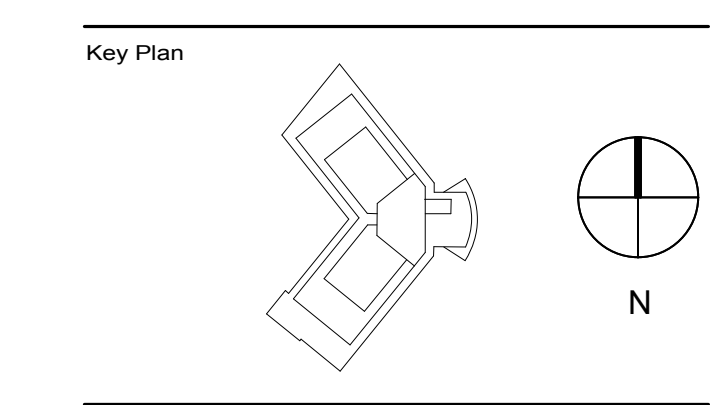


HOK
 620 Sixth Avenue 6th Floor
 New York, NY 10011 USA
 t +1 212 741 1200 f +1 212 633 1163

Canal House 3223 Grace St. N.W.
 Washington, DC 20007 USA
 t +1 202 944 1500 f +1 202 339 8800

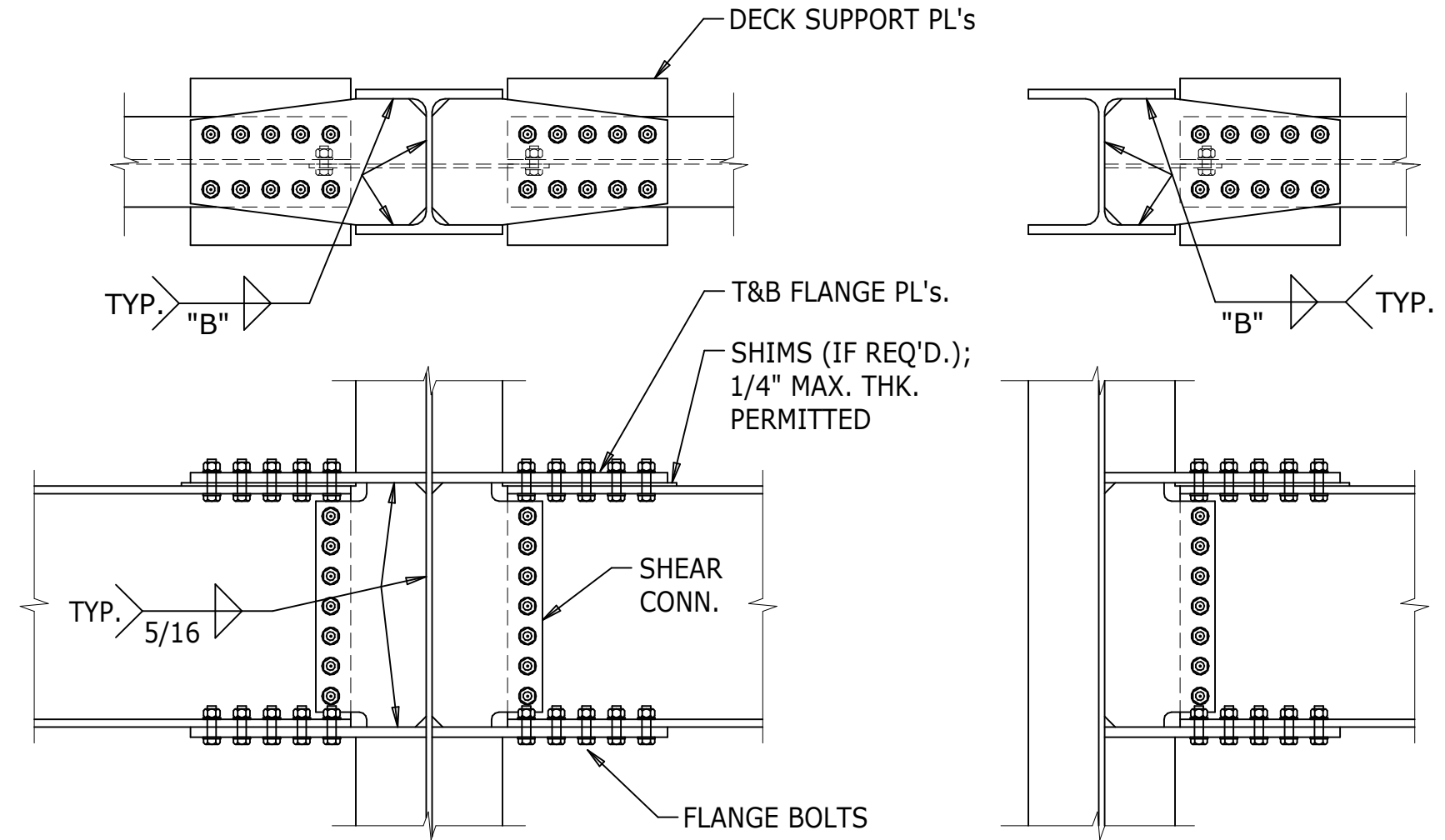
All reproduction & intellectual property rights reserved © 2008
 In Association with

THE HARMAN GROUP
 structural engineers
 parking consultants
 900 West Valley Forge Road, Suite 200, King of Prussia, PA 19406-6225
 610.337.3960 • 610.337.3359 fax • www.harmangroup.com



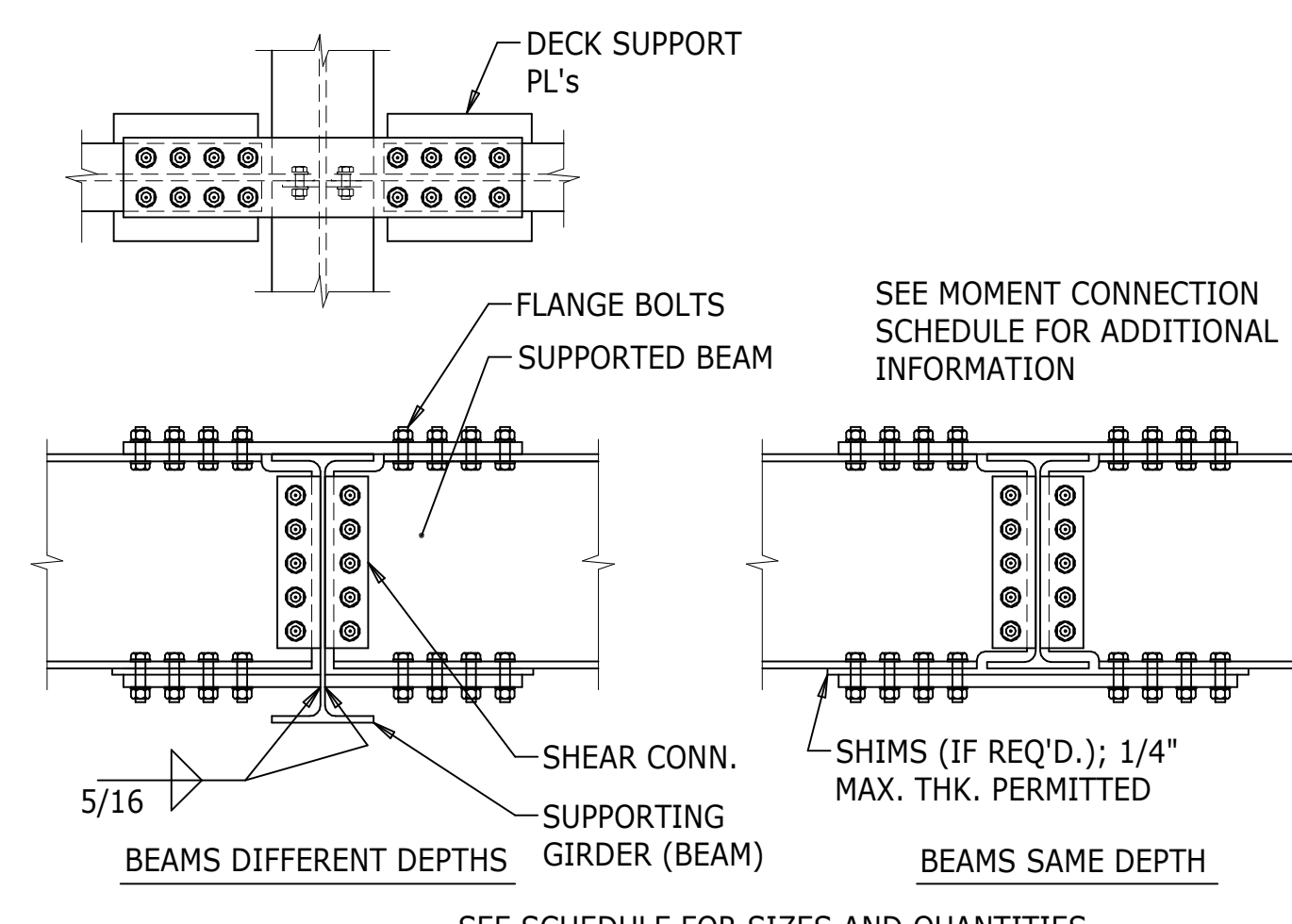
STIFFENER PL's; WIDTH TO MATCH WIDTH OF FLANGE PLATES
 SEE SCHEDULE FOR SIZES AND QUANTITIES.
 PLAN SYMBOLS:
 ■ INDICATES MOMENT CONNECTION W/O STIFFENER PLATES.
 ■ INDICATES MOMENT CONNECTION W/ STIFFENER PLATES.

1 BOLTED BEAM TO COLUMN FLANGE MOMENT CONNECTION

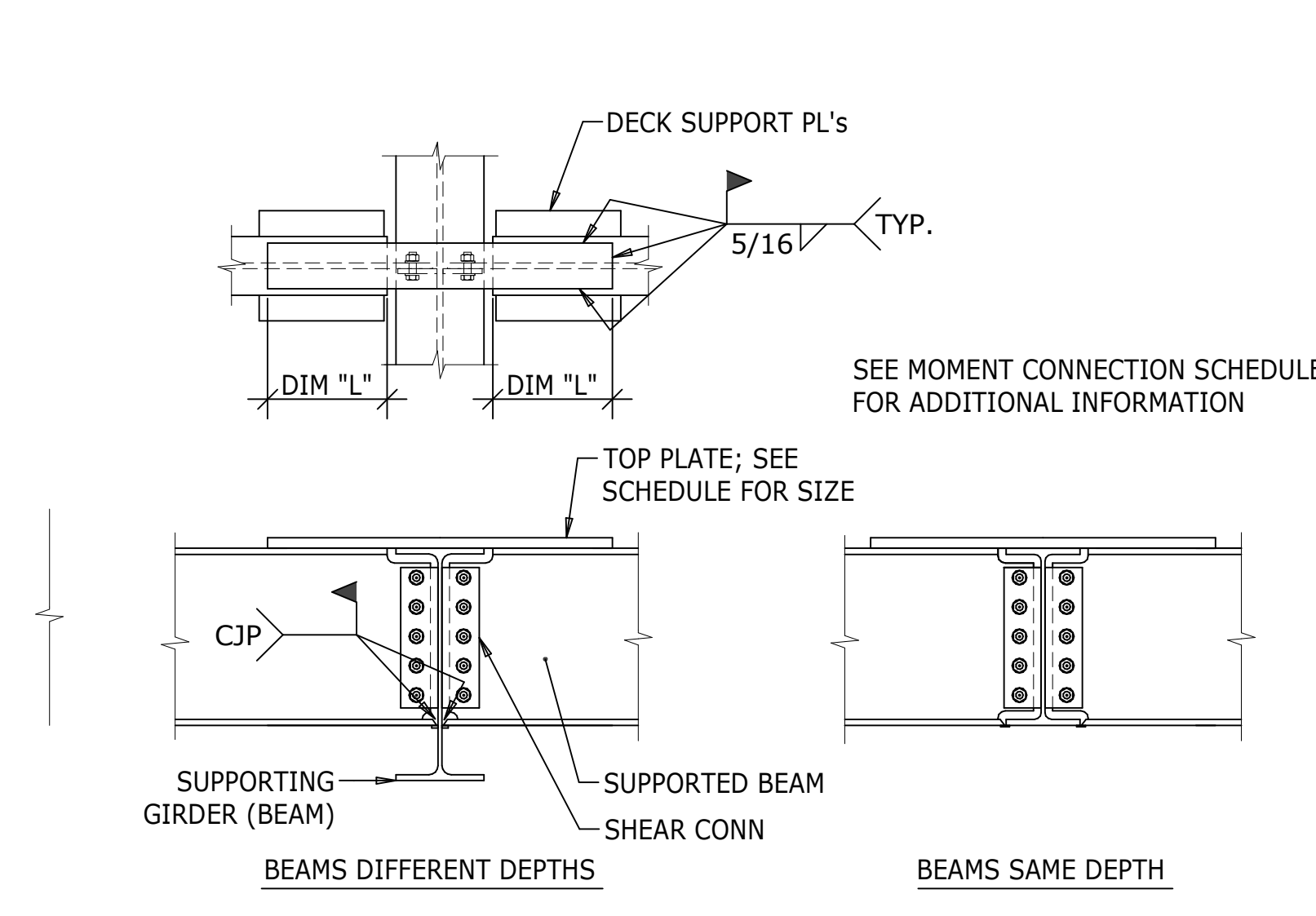


SEE SCHEDULE FOR SIZES AND QUANTITIES.
 PLAN SYMBOLS:
 ■ INDICATES MOMENT CONNECTION W/O STIFFENER PLATES.
 ■ INDICATES MOMENT CONNECTION W/ STIFFENER PLATES.

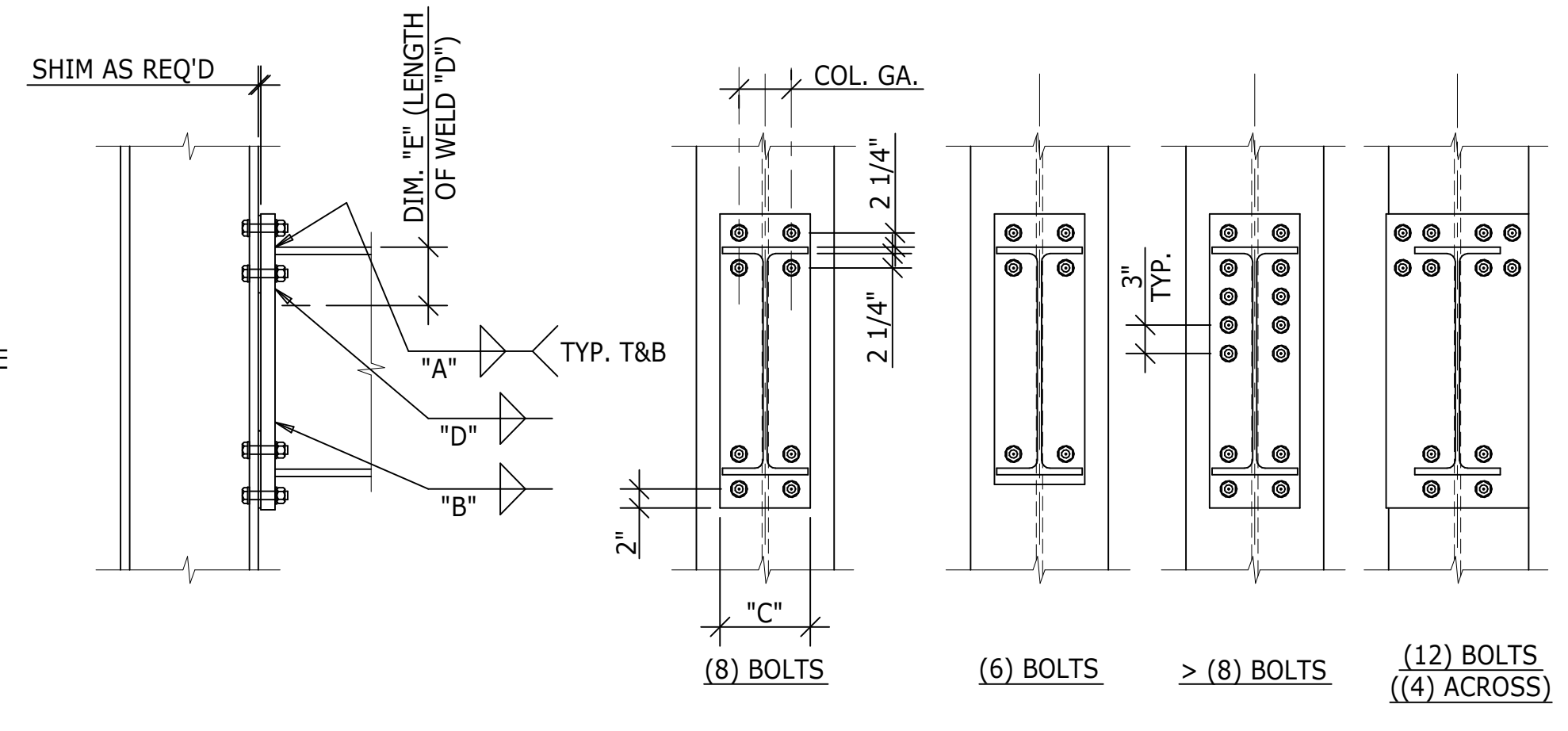
2 BOLTED BEAM TO COLUMN WEB MOMENT CONNECTION



3 BEAM TO GIRDER MOMENT CONNECTION FIELD BOLTED

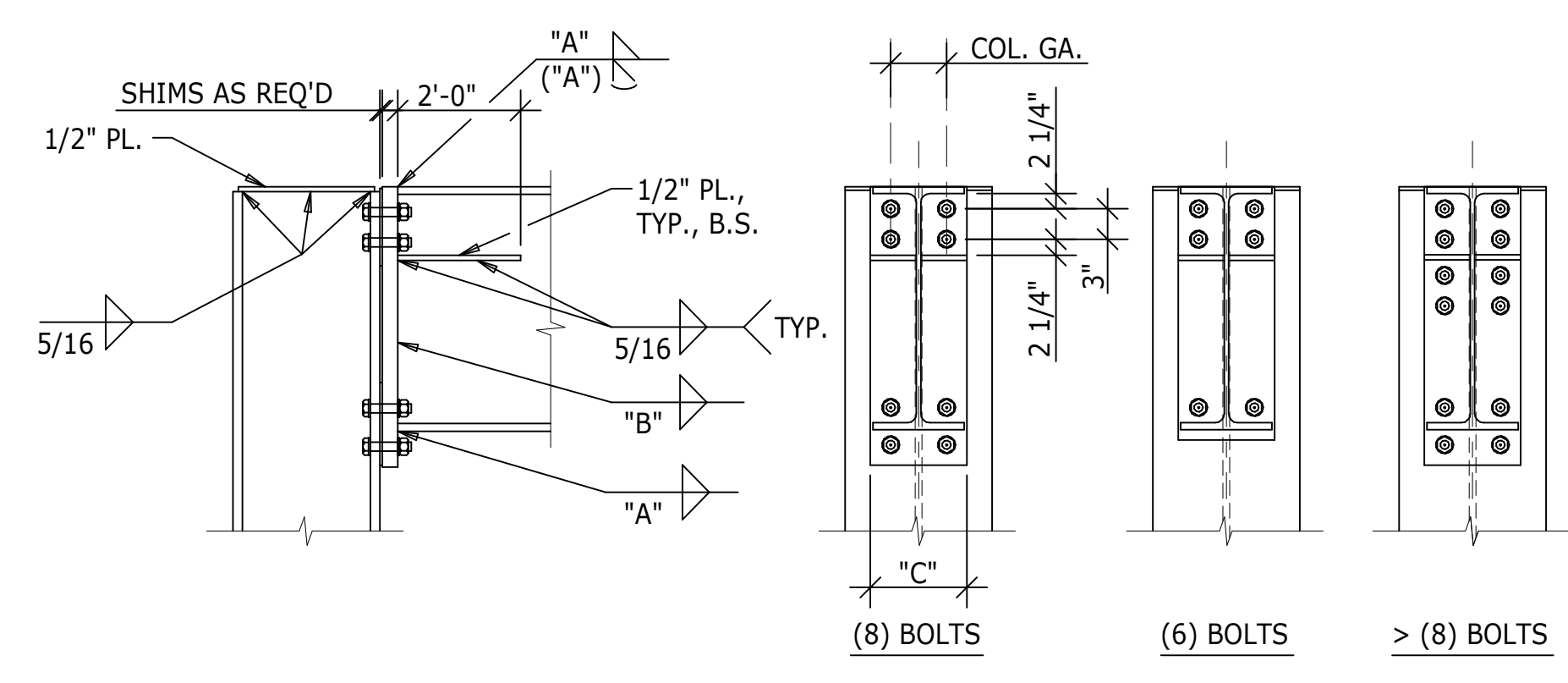


4 BEAM TO GIRDER MOMENT CONNECTION FIELD WELDED



NOTES:
 1. SHIMS (IF USED) SHALL BE STEEL AND SHALL EXTEND 2" MINIMUM BEYOND EDGE OF BOLTS ON ALL SIDES.
 2. SEE SCHEDULE FOR SIZES AND QUANTITIES.
 3. WHERE WELD \"D\" IS NOT SPECIFIED, WELD \"B\" TO OCCUR FOR FULL DEPTH OF WEB.
 4. DIM. \"C\" = BEAM FLANGE WIDTH + 1\"/>

5 END-PLATE BEAM TO COLUMN MOMENT CONNECTION



NOTES:
 1. SHIMS (IF USED) SHALL BE STEEL AND SHALL EXTEND 2" MINIMUM BEYOND EDGE OF BOLTS ON ALL SIDES.
 2. SEE SCHEDULE FOR SIZES AND QUANTITIES.
 3. DIM. \"C\" = BEAM FLANGE WIDTH + 1\"/>

6 END-PLATE BEAM TO COLUMN MOMENT CONNECTION AT TOP OF COLUMN

END-PLATE MOMENT CONNECTION SCHEDULE

BEAM SIZE	PHI*Mn	END PLATE THICKNESS	BOLTS			WELD "A"	WELD "B"	WELD "D"	WELD "E"
			DIA.	TYPE	QUANTITY				
-	-	-	7/8"	A325	-	-	-	-	-
-	-	-	-	-	-	-	-	-	-
-	-	-	-	-	-	-	-	-	-
-	-	-	-	-	-	-	-	-	-
-	-	-	-	-	-	-	-	-	-
-	-	-	-	-	-	-	-	-	-
-	-	-	-	-	-	-	-	-	-
-	-	-	-	-	-	-	-	-	-
-	-	-	-	-	-	-	-	-	-
-	-	-	-	-	-	-	-	-	-
-	-	-	-	-	-	-	-	-	-
-	-	-	-	-	-	-	-	-	-
-	-	-	-	-	-	-	-	-	-
-	-	-	-	-	-	-	-	-	-
-	-	-	-	-	-	-	-	-	-
-	-	-	-	-	-	-	-	-	-
-	-	-	-	-	-	-	-	-	-
-	-	-	-	-	-	-	-	-	-
-	-	-	-	-	-	-	-	-	-
-	-	-	-	-	-	-	-	-	-
-	-	-	-	-	-	-	-	-	-
-	-	-	-	-	-	-	-	-	-
-	-	-	-	-	-	-	-	-	-

NOTE: END-PLATE MOMENT CONNECTIONS SHALL BE DETAILED AS SLIP-CRITICAL CONNECTIONS, ALL BOLTS SHALL BE FULLY PRE-TENSIONED AND ALL BOLT HOLES SHALL BE STANDARD SIZE HOLES.

7 END-PLATE MOMENT CONNECTION SCHEDULE

MOMENT CONNECTION SCHEDULE

BEAM SIZE	PHI*Mn	T&B FLANGE PL'S		BOLTS			WELD "A"	WELD "B"
		THK. x WIDTH	DIA.	TYPE	QUANTITY			
W8x24	-	1/2" x 6"	7/8"	A325	8	1/4"	1/4"	
-	-	-	-	-	-	-	-	
-	-	-	-	-	-	-	-	
-	-	-	-	-	-	-	-	
-	-	-	-	-	-	-	-	
-	-	-	-	-	-	-	-	
-	-	-	-	-	-	-	-	
-	-	-	-	-	-	-	-	
-	-	-	-	-	-	-	-	
-	-	-	-	-	-	-	-	
-	-	-	-	-	-	-	-	
-	-	-	-	-	-	-	-	
-	-	-	-	-	-	-	-	
-	-	-	-	-	-	-	-	
-	-	-	-	-	-	-	-	
-	-	-	-	-	-	-	-	
-	-	-	-	-	-	-	-	
-	-	-	-	-	-	-	-	
-	-	-	-	-	-	-	-	
-	-	-	-	-	-	-	-	
-	-	-	-	-	-	-	-	
-	-	-	-	-	-	-	-	

NOTES:
 1. ALL BOLTS SHALL BE ASTM A325-SC WITH CLASS "A" FAYING SURFACES; BOLTS SHALL BE FULLY PRE-TENSIONED.
 2. PROVIDE STANDARD SIZE HOLES IN BEAM FLANGES; PROVIDE OVERSIZED (OVS) HOLES IN FLANGE CONNECTION PLATES.

8 MOMENT CONNECTION SCHEDULE

BASEPLATE SCHEDULE

COLUMN SIZE	BASEPLATE SIZE	GRADE
W8x24 TO W8x35	1 1/4" x 16" x 16"	A36
W8x40 TO W8x67	2" x 19" x 19"	A36
W10x33 TO W10x54	1 3/4" x 18" x 18"	A36
W10x60 TO W10x112	2 1/2" x 21" x 21"	A36
W12x40 TO W12x96	2 1/4" x 21" x 21"	A36
W12x106 TO W12x190	3" x 26" x 26"	A992 GR 50
W12x210 TO W12x252	4" x 30" x 30"	A992 GR 50
W12x279 TO W12x336	4 1/2" x 36" x 36"	A992 GR 50
W14x43 TO W14x82	2 1/2" x 26" x 26"	A36
W14x90 TO W14x145	2 3/4" x 26" x 26"	A36
W14x159 TO W14x257	3 1/2" x 32" x 32"	A992 GR 50
W14x283 TO W14x342	4 1/2" x 38" x 38"	A992 GR 50
W14x370 TO W14x426	5 1/2" x 42" x 42"	A992 GR 50
HSS 8x8 OR 8" Ø	1 3/4" x 16" x 16"	A36
HSS 10x10 OR 10" Ø	2" x 18" x 18"	A36
HSS 12x12 OR 12" Ø	2 1/4" x 20" x 20"	A36
HSS 14x14 OR 14" Ø	2 1/2" x 26" x 26"	A36

NOTES:
 1. ALL BOLTS SHALL BE ASTM A325-SC WITH CLASS "A" FAYING SURFACES; BOLTS SHALL BE FULLY PRE-TENSIONED.
 2. PROVIDE STANDARD SIZE HOLES IN BEAM FLANGES; PROVIDE OVERSIZED (OVS) HOLES IN FLANGE CONNECTION PLATES.

9 BASEPLATE SCHEDULE

F:\PROJECTS\2010\2010-04 - Bucks County Courthouse\Cadd\DWG\C&S_S_Model\User\JAD\208104 - BCJC.rvt 9/23/2010 8:31:30 PM